



*The Interfaith Center*

B R Y A N T U N I V E R S I T Y

*An Inspirational Place  
for Spirituality and Contemplation*



## THE INTERFAITH CENTER

# *An Opportunity to Develop the Heart of the Campus*

"Bryant's Interfaith Center will be so much more than a building. The center will become a campus landmark and an inspiration to the entire Bryant community."

President Ronald K. Machtley

"Spirituality is an essential part of the Character of Success. Whether or not students have a specific religion they adhere to, we all have a spiritual dimension. This facility will provide a place for worship and a center for learning about diverse religious traditions, in an ecumenical spirit."

Reverend Joseph Pescatello, Catholic Chaplain

"The Interfaith Center will provide great opportunities for the students to experience diversity and get to know one another. It will also provide a spiritual home and a sense of identity."

Professor Wendy Samter, Chair of the Communication Department and Hillel Adviser

"With the addition of the Interfaith Center, students can think now about how spirituality plays a role in their lives."

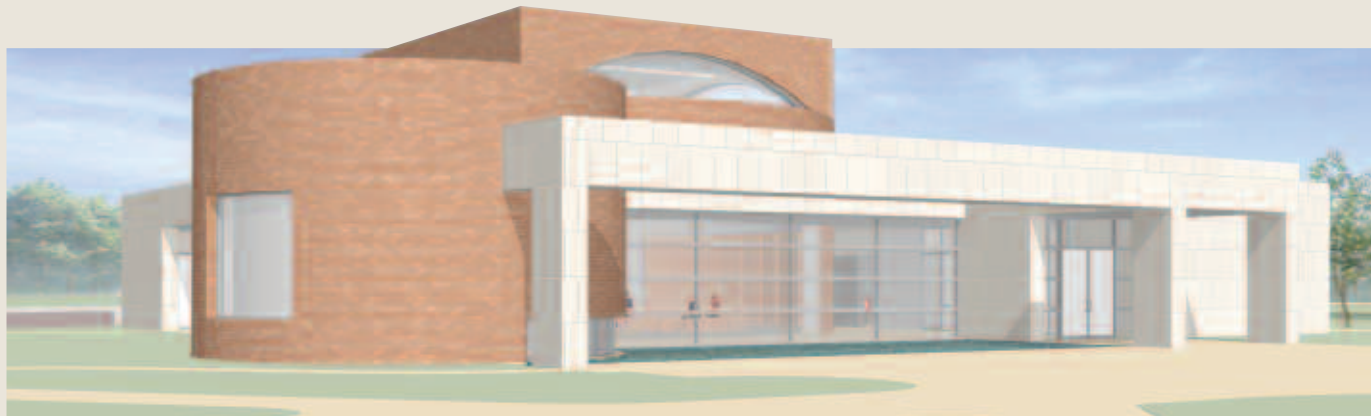
Christopher Corry '10

### **The Very Essence of the Character of Success**

A Bryant University education is an active endeavor. It happens in the classroom, on the playing fields, in the library, and in the residence halls. It also happens quietly, during community religious celebrations and services, as well as in moments of introspection, questioning, and spiritual discovery. While Bryant has always provided a holistic education for students, support for the spiritual dimension has been challenged by the lack of a sacred space on campus. Until now.

Although Bryant is not religiously affiliated, we recognize the great need to provide a special place for people of all faith perspectives to come together to express their spirituality and learn from one another. The Bryant Interfaith Center, currently under construction and scheduled to open in summer 2009, will serve this vital function. Designed to inspire all who enter, the Interfaith Center will occupy a central place in the life of Bryant, affording opportunities for reflection, worship, and learning.





### **A Community Center**

As a part of the residential campus experience, and in line with national trends, increasing numbers of students are participating in on-campus masses and other religious services, and in faith-based organizations such as Hillel and the Bryant Christian Fellowship. As globalization increases so does international student enrollment, and students with Islamic, Hindu, Buddhist, and other diverse faith traditions are coming to Bryant. The Interfaith Center will provide all students, faculty, staff, and alumni from various religious traditions with a spiritual home for religious services, a purposeful meeting place, a private sanctuary, and a hallowed ground for dialogue, concerts, and momentous occasions such as weddings.

### **An Inspirational Environment**

Located between the Bryant Center and the Bello Center for Information and Technology, the Interfaith Center overlooks Bryant's arching fountain and Hassenfeld Commons. Designed by the award-winning firm Gwathmey Siegel & Associates Architects, this 10,000 square foot facility will compliment the natural beauty of the Smithfield campus. Its impressive exterior will relate to the surrounding buildings through use of similar arches, limestone, yellowed brick, and glass.

Inside the Interfaith Center, natural elements including stone, wood, water, and light will create a reverential space. A reflecting pool in the center of the entry vestibule will set a contemplative tone. The wood-paneled sanctuary's focal point will be a ceiling-to-floor water wall, a stirring touchstone to the natural world which we all share. Sunlight will brilliantly illuminate the space

through curved windows within an arched ceiling. Moveable seating for 200 and a state-of-the-art sound system will accommodate various arrangements and events. A smaller, round room accommodating 50 will be adjacent to the sanctuary, to be used for daily services, personal reflection, and smaller gatherings. Offices and meeting rooms for Campus Ministry staff and students will be nearby as well. An open porch to one side of the sanctuary will create a quiet, outdoor room.

### **You Can Complete the Vision**

Such a magnificent, unique space will cost \$10 million to construct and furnish. Bryant has committed significant institutional funds, but it is only through private donations that we will be able to realize the full potential of this especially meaningful design.

Your contribution to Bryant University's Interfaith Center will ensure a worthy home for spirituality on campus, providing a crucial venue for facilitating character development through the exploration of religious diversity. An investment in the Interfaith Center is one which will significantly strengthen Bryant's community spirit. Generations of Bryant students will be touched by your support.

**To discuss your involvement in Bryant's new Interfaith Center, call (877) 353-5667 and ask to speak with a gift officer.**

# *The Interfaith Center*

## ABOUT THE ARCHITECTS

### **Gwathmey Siegel & Associates Architects**

Founded in 1968, Gwathmey Siegel is a world-renowned corporation offering master planning, architectural, interior, and product design services. The firm has an international reputation for excellence, confirmed by numerous design awards and inclusion in major exhibitions and histories of contemporary architecture.

### **Selected Notable Gwathmey Siegel Projects**

- Bryant University's George E. Bello Center for Information and Technology
- New York Public Library renovation and expansion
- Princeton University's James S. McDonnell Hall of Physics
- Solomon R. Guggenheim Museum renovation and addition

