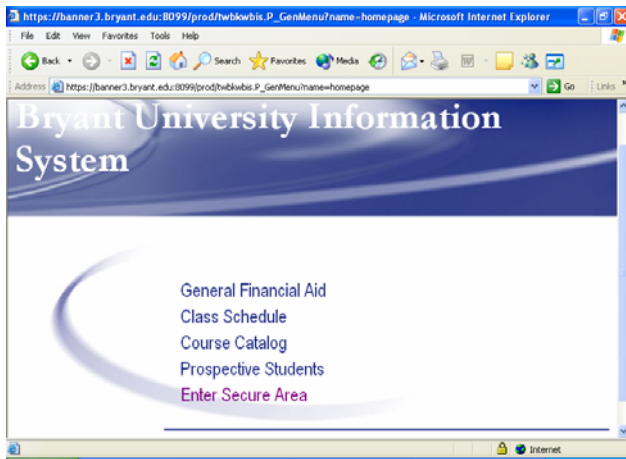
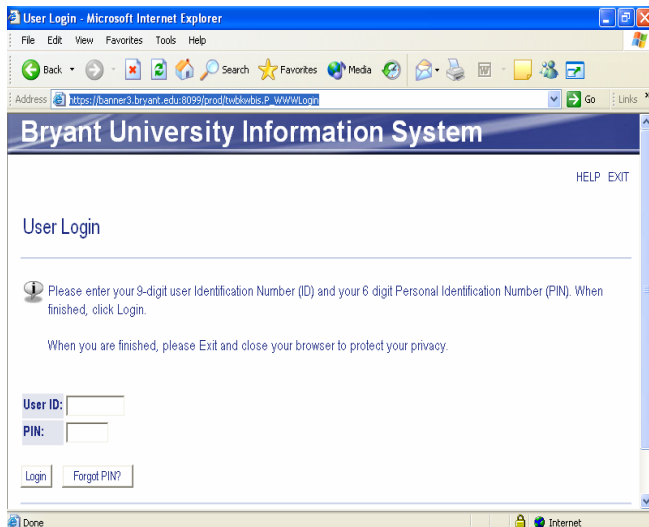


# Web CAPP Instructions

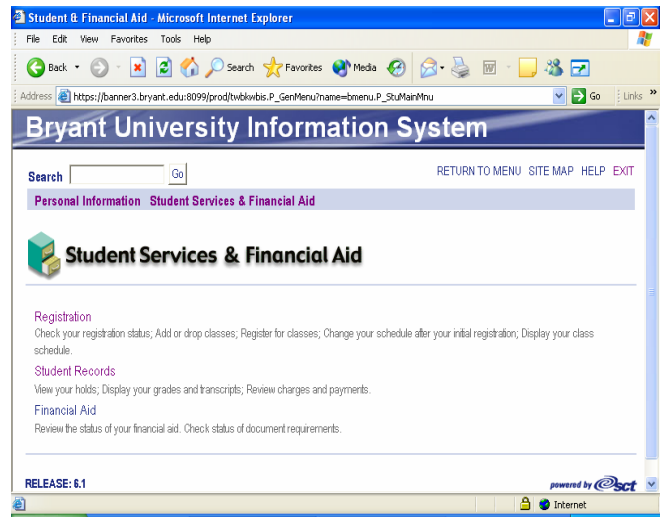
1. Log onto Banner by Clicking on *Enter Secure Area*:



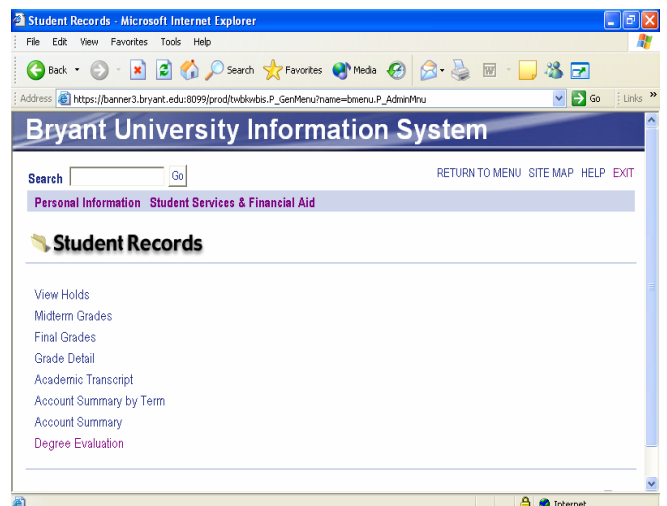
2. When you click on *Enter Secure Area* you will be prompted to enter your Student ID and PIN. Your Student ID is the 9 digit number beginning with 000. Your PIN was initially your 6 digit date of birth until you were prompted to change it. If you have any problems with either of these numbers please call Undergraduate Advising at 232-6210. Click Login.



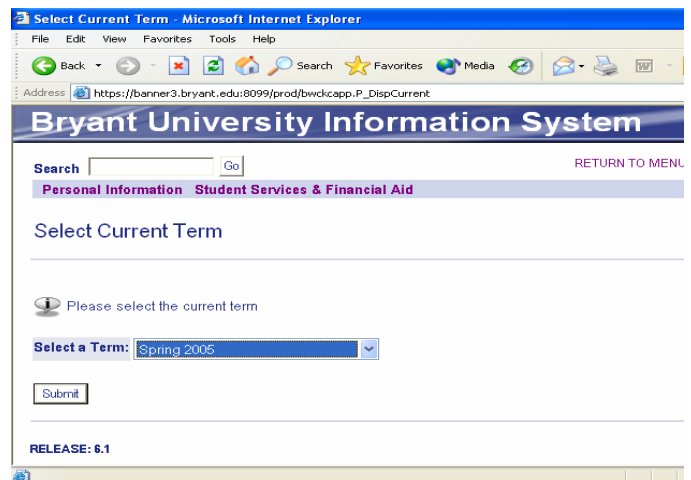
3. Click on *Student Services & Financial Aid*.



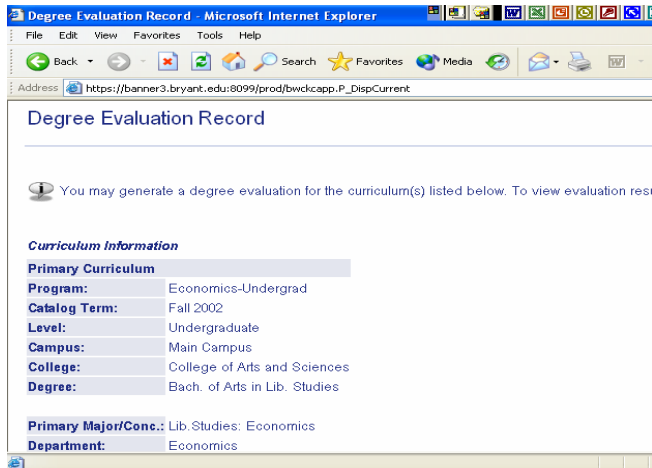
4. Click on Student Records



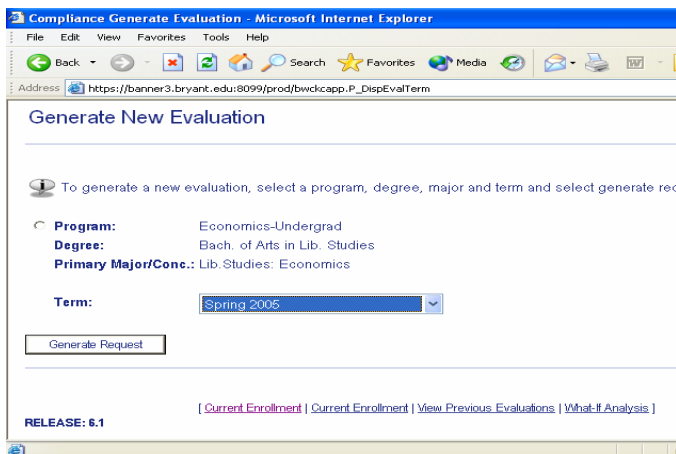
5. Click on *Degree Evaluation*. Select current term.



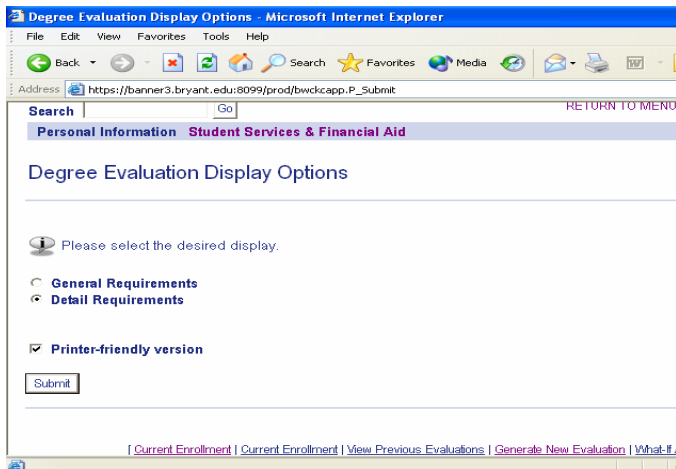
6. When you click *Submit* your degree, along with your assigned major/concentration will appear. Click on *Generate New Evaluation* at the bottom of the screen.



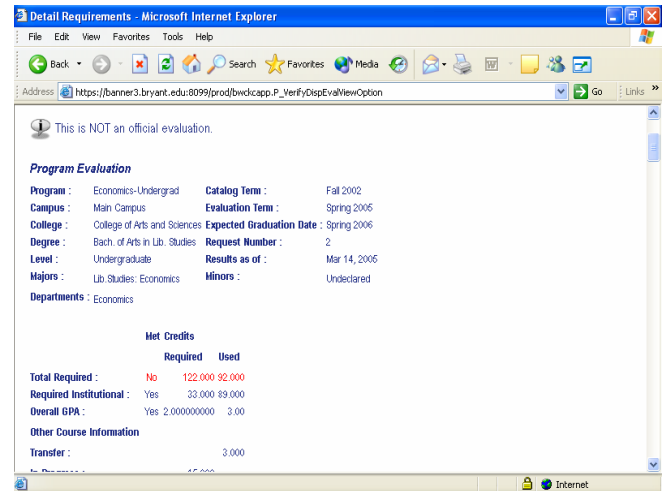
7. Click on program. Also select current term. Click *Generate Request*.



8. Click *Detail Requirements* and *Printer-Friendly Version*. Then Click *Submit*.

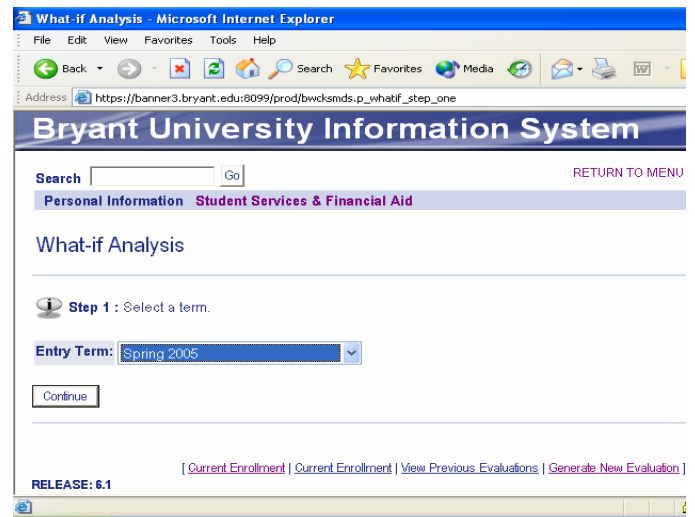


9. This brings up your degree, concentration and a list of the requirements that you have met and not met during your time at Bryant. Not met will be highlighted in **Red**. Please consult with an academic advisor to make sure that you are on track to graduate. Remember that the evaluation that is displayed is an unofficial audit.

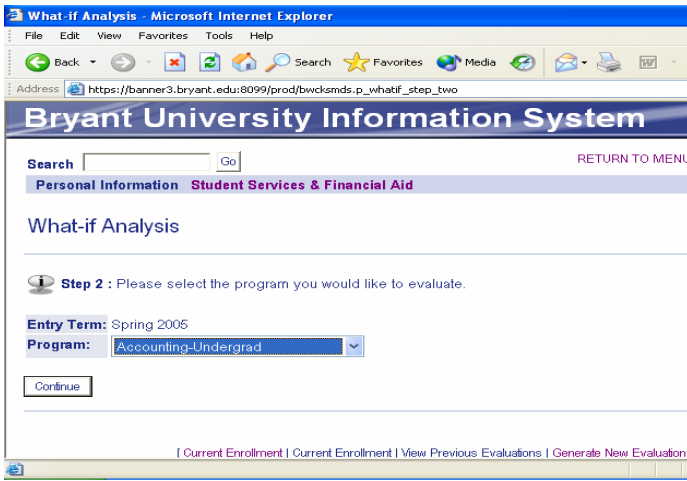


## Instructions for What-If Analysis

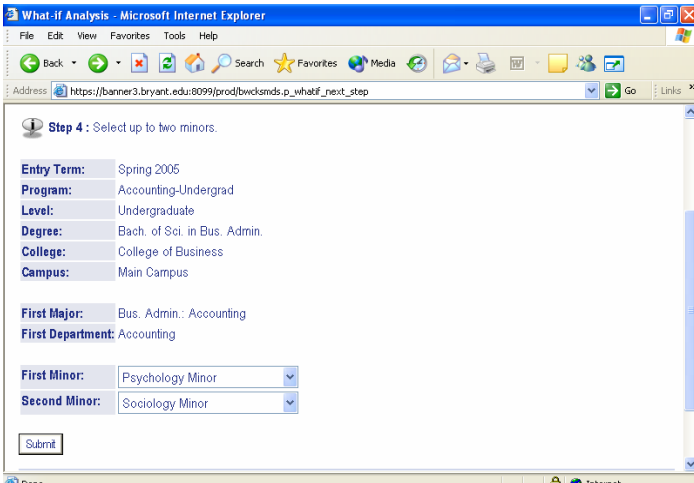
1. If you would like to run a *What-if Analysis* please click the text on the bottom of the screen. You will need to select an entry term.



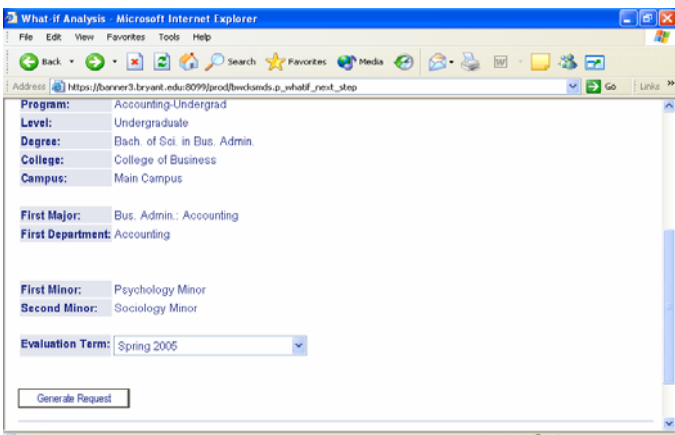
2. You now need to choose a program. You may want to check out a program for a number of reasons such as finding out course requirements, checking to see what your GPA would be in the new program, the feasibility of completing your degree on time if you decided to change concentration or major etc. Click *Continue* when you have chosen a program.



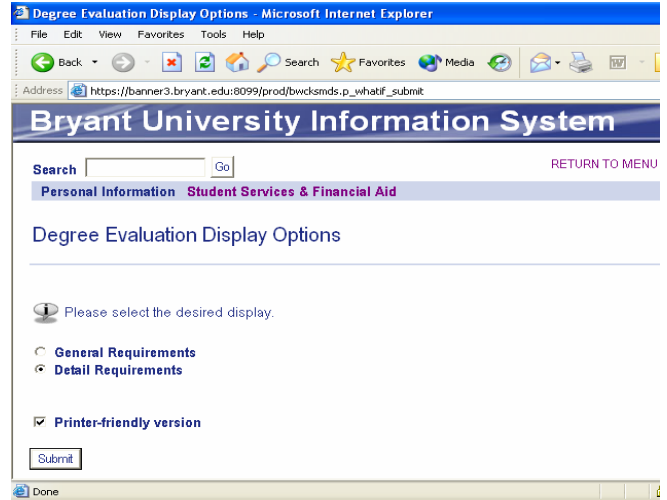
3. You now need to choose the only major/concentration that is offered for that program. You can also choose to *Add More*. *Add More* allows you to choose up to two minors. Click *Submit* when you are finished.



4. Select current term. Click *Generate Request*.



5. Click on *Detail Requirements* and *Printer-Friendly Version*. Click *Submit*.



6. A new evaluation will appear. This will list all the courses you have taken along with the respective grades you received. Because you chose a different program, your courses may now fall differently. Keep in mind that you have not officially changed your concentration or minor. You have merely conducted a What-If Analysis, a tool to help you better understand the differences in majors, concentrations and minors. You will need to speak with an academic advisor in order to officially change to your desired major, concentration or minor.

